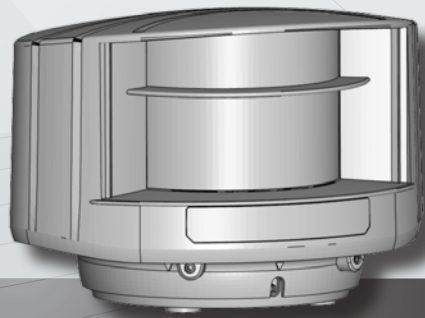




EN



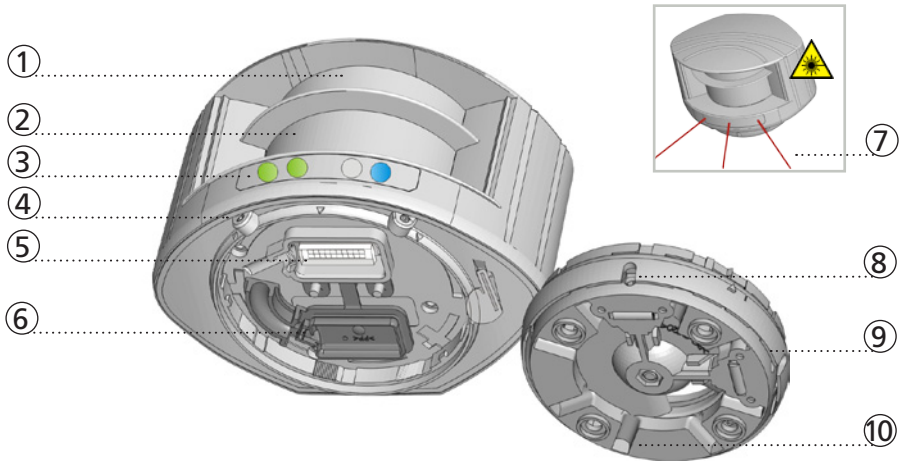
LZR[®] - S600

LASER SCANNER
FOR BUILDING AUTOMATION AND SECURITY

BUILDING AUTOMATION AND SECURITY

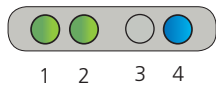
Other use of the device is outside the permitted purpose and can not be guaranteed by the manufacturer.
The manufacturer cannot be held responsible for incorrect installations or inappropriate adjustments of the sensor.

DESCRIPTION



- | | |
|--------------------------------|--|
| 1. laser sweep emission | 6. protection cover |
| 2. laser sweep reception | 7. visible laser beam (3) |
| 3. LED-signal (4) | 8. notch for tilt angle adjustment (2) |
| 4. screw for position lock (2) | 9. adjustable bracket |
| 5. connector | 10. cable conduit (4) |

LED-SIGNAL



1. Detection LED: relay 1 - field 1
2. Detection LED: relay 2 - field 2
3. Error LED
4. Power LED

- LED flashes quickly
- LED flashes
- LED flashes slowly
- LED is off

DETECTION LEDs

- detection
- no detection

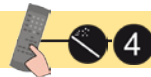
ERROR LED

- error
- no error

POWER LED

- power
- no power

TIP! All LEDs can be switched off and on again by remote control:



SYMBOLS



Caution!
Laser radiation



Remote control
sequence



Possible
remote control
adjustments

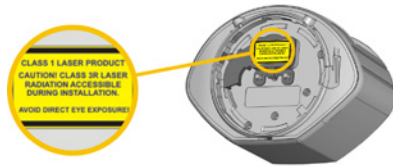


Factory values



Alarm

SAFETY



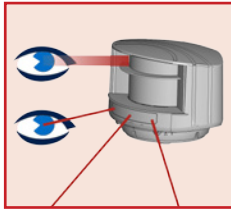
The device contains IR and visible laser diodes.
IR laser: wavelength 905nm; max. output pulse power 75W (Class 1 according to IEC 60825-1)
Visible laser: wavelength 650nm; max. output CW power 3mW (Class 3R according to IEC 60825-1)

The visible laser beams are inactive during normal functioning. The installer can activate the visible lasers if needed.

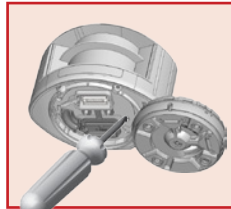


CAUTION!

Use of controls, adjustments or performance of procedures other than those specified herein may result in hazardous radiation exposure.



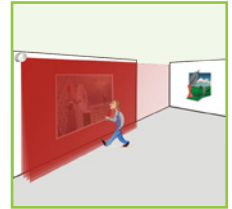
Do not look into the laser emitter or the visible red laser beams.



The warranty is void if unauthorized repairs are made or attempted by unauthorized personnel.

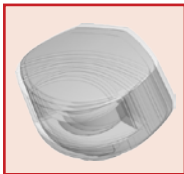


Only trained and qualified personnel may install and adjust the sensor.

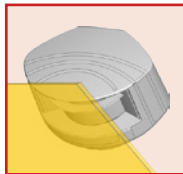


Test the good functioning of the installation before leaving the premises.

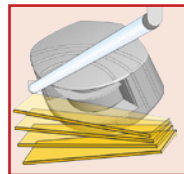
INSTALLATION AND MAINTENANCE



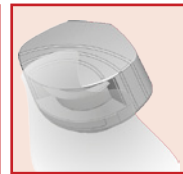
Avoid extreme vibrations.



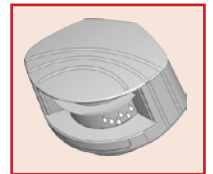
Do not cover the front screens.



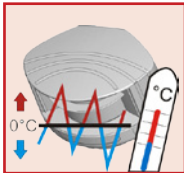
Avoid moving objects and light sources in the detection field.



Avoid the presence of smoke and fog in the detection field.



Avoid condensation.



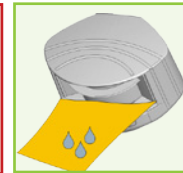
Avoid exposure to sudden and extreme temperature changes.



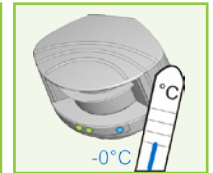
Avoid direct exposure to high pressure cleaning.



Do not use aggressive products to clean the front screens.



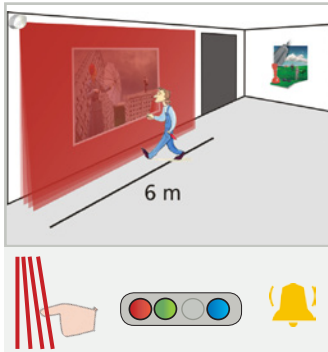
Wipe the front screens regularly with a clean and damp cloth.



Keep the sensor permanently powered in environments where the temperature can descend below 0°C.

POSSIBLE APPLICATIONS

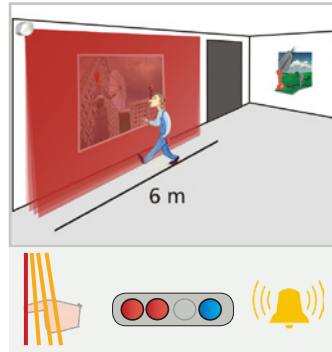
PROTECTION OF WORKS OF ART: WARNING & ALARM



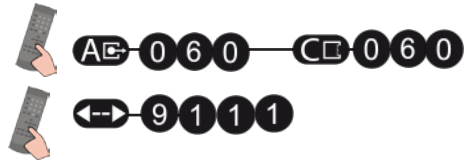
Field 1 (4 active curtains) triggers relay 1: warning

Adapt the field widths (6 m for example):

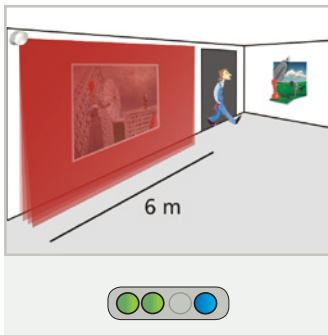
Reduce field 2 to 1 curtain (C1):



Field 2 (only curtain C1 active) triggers relay 2: alarm



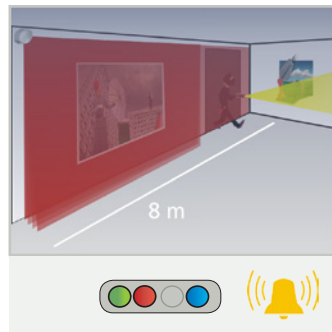
DAY AND NIGHT FEATURE



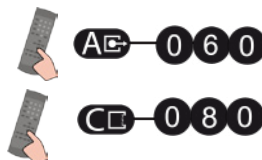
During day time, only field 1 is active and triggers relay 1.

Adapt the field width of field 1 (6 m for example):

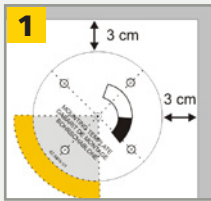
Adapt the field width of field 2 (8 m for example):



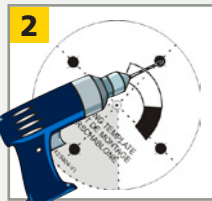
During night time field 2 is active too and triggers relay 2: intrusion alarm



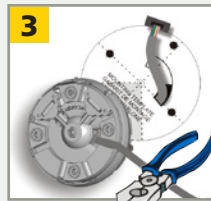
1 MOUNTING



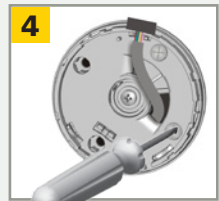
Use the adhesive mounting template to position the sensor correctly. The grey area indicates the detection range.



Drill 4 holes as indicated on the mounting template. Make a hole for the cable if possible.



Pass the cable +/- 10 cm through the cable opening. If drilling an opening is not possible, use the cable conduits on the back side of the bracket.



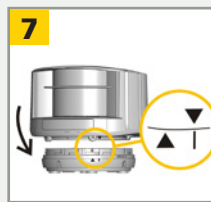
Position the bracket and fasten the 4 screws firmly.



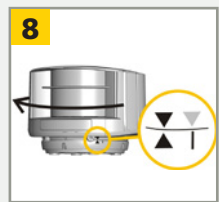
Open the protection cover, plug the connector and position the cable in the slit.



Close the protection cover and fasten it firmly.

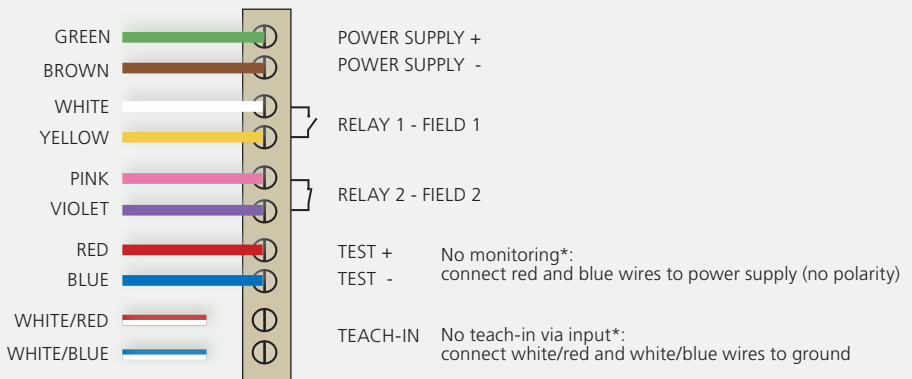


Position the housing on the bracket.



Turn the sensor until the two triangles are face to face.

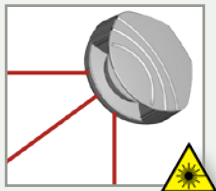
2 WIRING



3 POSITIONING

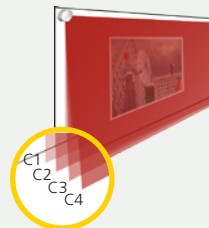


Unlock the sensor and activate the visible laser beams.

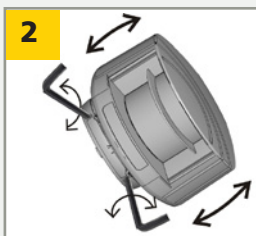


The visible laser beams indicate approximately the position of curtain C1 and limit the angle of the detection field.

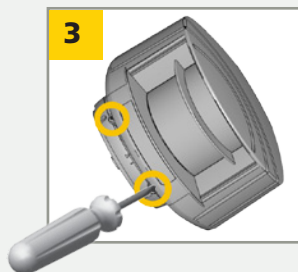
The visible laser beams stay activated for 15 minutes or can be turned off the same way they were activated.



Adjust the **lateral position** of the detection field.



Adjust the **tilt angle** of the detection field with the hex key.



Lock the position of the mounting bracket to avoid malfunctioning in case of extreme vibrations.

4 MOUNTING SIDE

Select the corresponding mounting side.

Stay outside of the detection field to avoid disturbances.

The sensor then learns its environment and automatically determines the detection field(s). Both red LEDs flash slowly and the 3 visible laser beams automatically light up during 30 seconds.



1

2

3

4

5

left

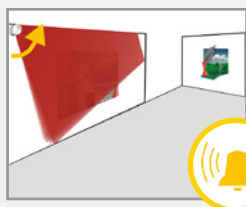
right

left

right

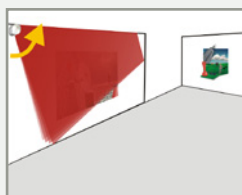
centre

WITH BACKGROUND



The sensor memorizes the floor as reference point and will signal a fault in case the orientation of the sensor is changed (on purpose or by accident).

WITHOUT BACKGROUND



No reference point is memorized, no alarm in case of interference with sensor position.

5 FIELD DIMENSIONS

FIELD 1

WIDTH



AC 001 - 250 000

0.1 m - 25.0 m

field 2 = field 1

10.0 m

HEIGHT



BE 001 - 250 000

0.1 m - 25.0 m

no field

10.0 m

FIELD 2

WIDTH



CE 001 - 250 000

0.1 m - 25.0 m

no field

10.0 m

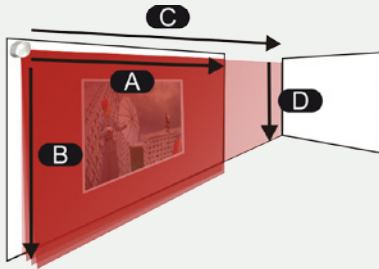
HEIGHT



DE 001 - 250

0.1 m - 25.0 m

10.0 m



EXAMPLES



AC 062 for a field width of 6.2 m



BE 045 for a field height of 4.5 m

IMPORTANT: Test the good functioning of the installation before leaving the premises.

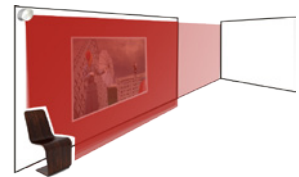
TEACH-IN

The teach-in can be launched either via remote control or via connecting the white/red and white/blue wires.

Launch a teach-in:

- after changing the sensor position
- when new objects are added to or changed in the detection zone.

During teach-in, the sensor learns its surroundings and adapts the detection field shape to these. Objects in the detection field will be cut out.



Stay outside of the detection field to avoid disturbances.

To launch a teach-in via input, please contact SENSORIO for more information.

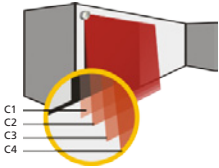
To launch a teach-in via remote control, use the following sequence:



Wait for the sensor to learn its environment or lock it by remote control.

REMOTE CONTROL ADJUSTMENTS (OPTIONAL)

DETECTION CURTAINS



CURTAIN C1 C2 C3 C4

- 0 deactivate curtain on both fields
- 1 activate curtain only on field 1
- 2 activate curtain only on field 2
- 9 activate curtain on both fields



EX: C1 + C2 active on field 1 only
C3 + C4 active on field 2 only



C1 active on both fields
C2+C3 active on field 2 only
C4 deactivated



All curtains active on both fields

The distances between the curtains depend on the mounting height and side. When mounted on the left, the distance between the first and the last curtain is approximately 10 cm for every meter (mounting height). **Example:** at 5 m the distance is 50 cm.

UNCOVERED ZONE

F2	0	1	2	3	4	
	5	10	15	20	25	cm

IMMUNITY FILTER

	1	2	3	4	5	6	7	8
	indoor	outdoor low	outdoor med	outdoor high	indoor	outdoor low	outdoor med	outdoor high
	Increased immunity to rain, snow, fog...				Increased sensitive (detection of black objects, ...)			

MIN. OBJECT SIZE

approximate values

	0	1	2	3	4	
	off	5	10	20	40	cm

OUTPUT ACTIVATION DELAY

approximate values

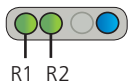
	0	1	2	3	4	5	6	7	8	9	
	off	100	200	300	400	500	600	700	800	900	ms

The outputs are triggered after a constant detection time of x ms (ex. value 3= 300 ms).

DETECTION FIELD REDIRECTION

F1	0	1
R1	field 1	field 1 or field 2
R2	field 2	field 2

OUTPUT CONFIGURATION



	1	2	3	4	
R1	A - NO	P - NC	P - NC	A - NO	A = active P = passive
R2	P - NC	A - NO	P - NC	A - NO	NO = normally open NC = normally closed

HOW TO USE THE REMOTE CONTROL



After unlocking, the red LED flashes and the sensor can be adjusted by remote control.

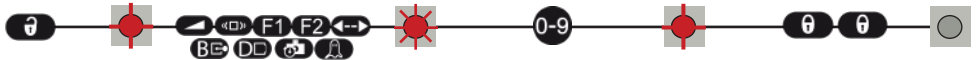


If the red LED flashes quickly after unlocking, you need to enter an access code from 1 to 4 digits.



To end an adjustment session, always lock the sensor.

ADJUSTING ONE OR MORE PARAMETERS



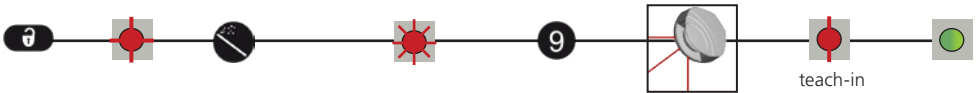
CHECKING A VALUE



= field width: 4.2 m

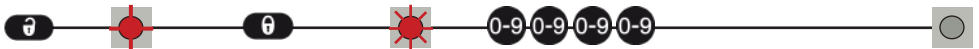
= field width is defined by teach-in

RESTORING TO FACTORY VALUES



SAVING AN ACCESS CODE

The access code is recommended for sensors installed close to each other.



DELETING AN ACCESS CODE



Enter the existing code

30 minutes after last use, the sensor locks the access to the remote control session. Cut and restore power supply. The remote control session is accessible again during 30 minutes.



X = THE NUMBER OF FLASHES INDICATES THE VALUE OF THE PARAMETER.

TROUBLESHOOTING

	No blue LED	There is no power.	1 Check cable and connexion.
		The polarity of the power supply is inverted.	1 Check the polarity of the power supply.
		All LEDs have been deactivated by remote control.	1 Activate the LEDs by remote control.
	Only the blue LED is on.	The test input is not connected.	1 Check wiring. The red and blue cable have to be connected to the test input or the power supply.
	The detection LED remains green.	The detection field is too small or deactivated.	1 Check the size of the fields. 2 Launch a teach-in.
		The object size is too small.	1 Decrease the min. object size.
	The detection LED remains red.	Someone or something is in the detection field.	1 Step out of the field and/or remove the any object(s) from the field.
		The field is touching the floor, the wall or the door, which leads to detection.	1 Activate the 3 red beams and check if the position of the sensor is correct. If not, adjust the hex screws. 2 Verify the field size. 3 Launch a teach-in.
		No background (reference point) is found.	1 Check the position of the sensor. 2 Check the mounting side setting. If there is no background, set the mounting side to value 3 to 5. 3 Launch a new teach-in.
	The orange LED is flashing and the detection LEDs are red.	The sensor is masked.	1 Verify and clean the front screens with a damp cloth.
		The power supply voltage is exceeding the acceptable limits.	1 Check the power supply voltage.
	The orange LED is on.	The sensor exceeds its temperature limits.	1 Verify the outside temperature where the sensor is installed. Eventually protect the sensor from sunlight using a cover.
		Internal error	1 Wait a few seconds. If the LED remains ON, reset the power supply. If the LED turns on again, replace the sensor.
		30 minutes after last use of the remote control, the sensor locks the access to the remote control session.	1 Cut and restore power supply. The remote control session is accessible again during 30 minutes.
	The sensor does not respond to the remote control.	The batteries in the remote control are not installed properly or dead.	1 Verify or replace the batteries.
		The remote control is badly pointed.	1 Point the remote control towards the sensor, but with a slight angle. The RC should not be pointed in a right angle in front of the sensor.
		A reflective object is in close proximity to the sensor.	1 Avoid highly reflective material in proximity to the sensor.
		You have to enter a code or the wrong code was entered.	1 Please contact SENSORIO.
	The sensor does not unlock.	You have to enter a code or the wrong code was entered.	1 Please contact SENSORIO.

TECHNICAL SPECIFICATIONS

Technology:	laser scanner, time-of-flight measurement
Detection mode:	movement and presence
Detection range:	default: 10 m x 10 m @ 2% remission factor* max: 25 m x 25 m
Angular resolution:	0.3516 °
Min. detected object size (typ.):	2.1 cm @ 3 m; 3.5 cm @ 5 m; 7 cm @ 10 m; 17.5 cm @ 25 m (in proportion to object distance)
Emission characteristics:	
IR laser:	wavelength 905 nm; max. output pulse power 75 W (CLASS 1)
Red visible laser:	wavelength 650 nm; max. output CW power 3 mW (CLASS 3R)
Supply voltage:	10-35 V DC @ sensor side
Power consumption:	< 5 W
Peak current at power-on:	1.8 A (max. 80 ms @ 35 V)
Cable length:	10 m
Response time:	typ 20 ms; max. 80 ms (+ output activation delay)
Output:	2 electronic relays (galvanic isolated - polarity free)
Max. switching voltage:	35 V DC / 24 V AC
Max. switching current:	80 mA (resistive)
Switching time:	t _{ON} =5 ms; t _{OFF} =5 ms
Output resistance:	typ 30 Ω
Voltage drop on output:	< 0.7 V @ 20 mA
Leakage current:	< 10 μA
Input:	2 optocouplers (galvanic isolated - polarity free)
Max. contact voltage:	30 V DC (over-voltage protected)
Voltage threshold:	Log. H: >8 V DC; Log. L: <3 V DC
Response time monitoring input:	< 5 ms
LED-signal:	1 blue LED: power-on status 1 orange LED: error status 2 bi-coloured LEDs: detection/output status (green: no detection; red: detection)
Dimensions:	125 mm (D) x 93 mm (W) x 70 mm (H) (mounting bracket + 14 mm)
Material:	PC/ASA
Colour:	black or white
Mounting angles on bracket:	-45 °, 0 °, 45 °
Rotation angles on bracket:	-5 ° to +5 ° (lockable)
Tilt angles on bracket:	-3 ° to +3 °
Protection degree:	IP65
Temperature range:	-30 °C to +60 °C if powered; -10 °C to +60 °C unpowered
Humidity:	0-95 % non-condensing
Vibrations:	< 2 G
Pollution on front screens:	max. 30 %; homogenous
Norm conformity:	2006/95/EC: LVD; 2002/95/EC: RoHS; 2004/108/EC: EMC EN 60529:2001; IEC 60825-1:2007 Laser Class 1 & 3R; EN 60950-1:2005; EN 61000-6-2:2005 EMC - Industrial level EN 61000-6-3:2006 EMC - Commercial level

Specifications are subject to changes without prior notice.
All values measured in specific conditions.

*For other options, please contact SENSORIO



A DIVISION OF BEA SA | LIEGE SCIENCE PARK | ALLÉE DES NOISETIERS 5 - 4031 ANGLEUR [BELGIUM]
T +32 4 361 65 89 | F +32 4 361 28 58 | INFO@SENSORIO.BE | WWW.SENSORIO.BE



BEA hereby declares that the LZR®-S600 is in conformity with the basic requirements and the other relevant provisions of the directives 2006/95/EC, 2002/95/EC and 2004/108/EC.

Angleur, November 2012 Jean-Pierre Valkenberg, authorized representative and responsible for technical documentation
The complete declaration of conformity is available on our website: www.sensorio.be



EC countries: according to the directive 2002/96/EC for Waste Electrical and Electronic Equipment (WEEE)